

sensIQ S

EVO black

EAN 4007841 034979

Article number 034979



Infrarot-Sensor 3 x
100°



3 Zonen skalierbar
2-20m

2000 W

2000 W Max. (LED-
fähig)



IP54



2 - 2000 Lux-
Tageslichtbetrieb



5 Sek - 15 Min



Ideal 2 - 5 m

Teach

Teach mode



Energie sparen

5 years

Herstellergarantie
steinel-
professional.de/
garantie

Function description

The evolution of perfection. The sensIQ S is just as perfect as its larger role model. For indoors and outdoors, ideal for building entrances, loading bays, for mounting heights of up to 5 m, quadruple sensor system for optimum surveillance over 3x100° coverage angle, 20 m reach (tangential), reach setting to the accuracy of a metre in 3 independent directions. Remote control and corner wall mount bracket included.

Technical specifications

Dimensions (L x W x H)	128 x 114 x 74 mm
With motion detector	Yes
Manufacturer's Warranty	5 years
Settings via	Remote control, Potentiometers, Smart Remote
With remote control	Yes
Version	black
PU1, EAN	4007841034979
Type	Motion detectors
Application, place	Indoors, Outdoors
Application, room	multi-storey / underground car park, outdoors, warehouse, front door, all round the building, courtyard & driveway, Indoors
Colour	black
Colour, RAL	9005
Includes corner wall mount	Yes
Installation site	wall, corner

LED lamps > 2 W < 8 W	300 W
LED lamps > 8 W	600 W
Capacitive load in µF	176 µF
Power supply, detail	500 VA max., 120 V
Technology, sensors	passive infrared, Light sensor
Mounting height	2,00 – 5,00 m
Mounting height max.	5,00 m
Optimum mounting height	2 m
Detection angle	300 °
Angle of aperture	180 °
Sneak-by guard	Yes
Capability of masking out individual segments	Yes
Electronic scalability	No
Mechanical scalability	Yes
Reach, radial	r = 4 m (42 m²)
Reach, tangential	r = 20 m (1047 m²)

sensIQ S

EVO black

EAN 4007841 034979

Article number 034979

**Technical specifications**

Installation	Surface wiring, Wall, corner	Switching zones	1360 switching zones
IP-rating	IP54	Functions	Normal / test mode, Manual ON / ON-OFF
Ambient temperature	-20 – 50 °C	Twilight setting	2 – 1000 lx
Material	Plastic	Time setting	5 s – 15 Min.
Mains power supply	100 – 240 V / 50 – 60 Hz	Basic light level function	No
Switching output 1, resistive	2000 W	Main light adjustable	No
Switching output 1, number of LEDs / fluorescent lamps	50 pcs.	Twilight setting TEACH	Yes
Fluorescent lamps, electronic ballast	1500 W	Constant-lighting control	No
Fluorescent lamps, uncorrected	1000 VA	Interconnection	Yes
Fluorescent lamps, series-corrected	700 VA	Type of interconnection	Master/master
Fluorescent lamps, parallel-corrected	1000 VA	Interconnection via	Cable
Switching output 1, low-voltage halogen lamps	1000 VA		
LED lamps < 2 W	100 W		

Accessories

EAN 4007841 007638	Remote control RC9
EAN 4007841 608804	Corner wall mount sensIQ S
EAN 4007841 608835	Corner wall mount sensIQ S
EAN 4007841 009151	Remote control Smart Remote
EAN 4007841 608828	Corner wall mount sensIQ S

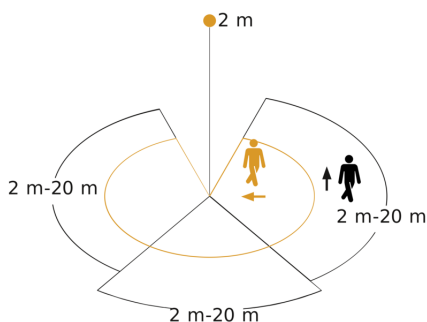
sensIQ S

EVO black

EAN 4007841 034979

Article number 034979

Detection Zone



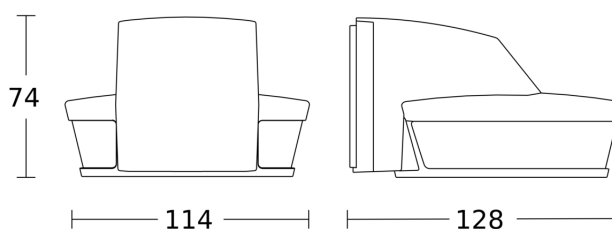
Possible mounting height: 2,00 m – 5,00 m

Orange: radial

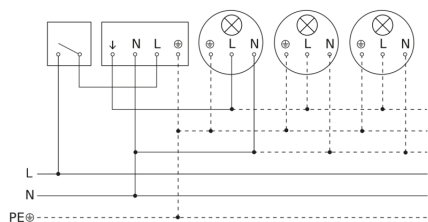
Black: tangential

3 scalable zones

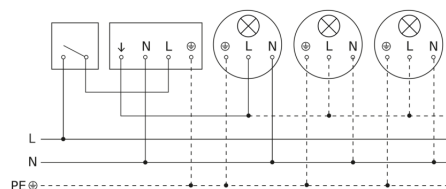
Dimension Drawing



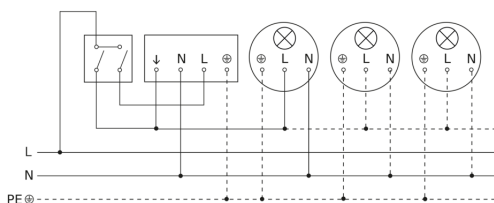
Light without neutral conductor



Light with neutral conductor



Connection using two-circuit switch for manual and automatic operation



Connection of 4-fold push-button coupler to DALI2 APC

